

General data generation guide

Information about creating print data



1 Foreword	3
2 Dieline / tool data	4
3 Application programs	4
4 Technical print data requirements	5
4.1 Image resolutions	5
4.2 Fonts	5
4.3 Minimum font size	5
4.4 Minimum line thickness	5
4.5 Bleed margin	6
4.6 Edge distance	6
4.7 Barcode	7
4.8 Colour structure	7
4.9 Minimum line thickness for foil and relief embossing	7
5 Saving the print data	8
5.1 Creating PDFs	8
5.2 Open data	8
6 Data transfer	9
6.1 Uploading data via FTP	9
6.2 Uploading data via HTTPS	9

1.0

Foreword

Dear Customer,

To ensure that our joint printing project runs smoothly, we would like to ask you to follow our print data generation information.

Data that does not meet our requirements can be adapted by our Preliminary Printing Department on request. We ask for your understanding that this may lead to delays and additional expenses being charged.

Please contact us in the event of any questions. We will be happy to help you.

Your Karl Knauer Team

KARL KNAUER KG

Zeller Straße 14
77781 Biberach/Baden
Deutschland

T +49 (7835) 782 560
ebv@karlknauer.de
www.karlknauer.de

2.0

Dieline / tool data

Please always use the current tool data (design drawing) that we provide you with for the graphic design on a scale of 1:1.

For the representation of the dieline, please create your very own full-tone colour with a unique name and the 'overprinting' attribute.

Always place the dieline on a separate level. This level must not contain any elements to be printed.

3.0

Application programs

Based on the macOS operating system, we accept data from the following programs:



Adobe Acrobat



Adobe Illustrator



Adobe InDesign



Esko ArtPro

4.0

Technical print data requirements

4.1

Image resolutions

- Min. 300 dpi for images (with > 100% placement)
- Min. 1,200 dpi for bitmaps (with > 100% placement)

4.2

Fonts

When providing open program files (Adobe Illustrator / InDesign), all fonts must be converted into paths.

If you would like us to make text changes at your request, please obtain all the fonts and deliver the fonts used too.

4.3

Minimum font size

Positive 5 Pt

Negative 6 Pt

(for single-colour text)

(for single-colour background)

Please note that multi-coloured text in small point sizes in printing may lead to an unclean typeface.

4.4

Minimum line thickness

Positive 0,1 mm

Negative 0,2 mm

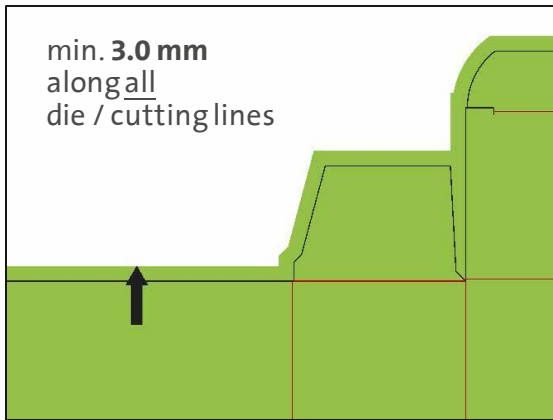
(for a single-coloured line)

(for a single-coloured line / background)

Please note that thin, multi-coloured lines can lead to an unclean result in printing due to register variations.

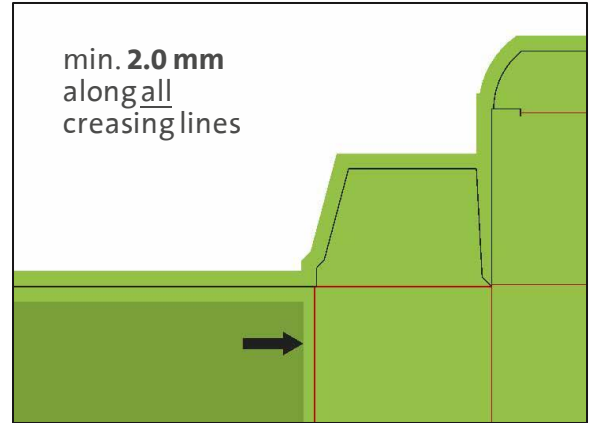
4.5

Bleed margin (applies to all elements with bleed)



4.6

Edge distances (applies to all elements that are not to be cut or that are not to run into the creasing edges)

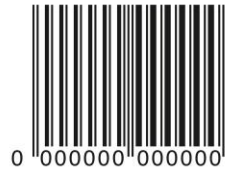


These edge distances must be increased by 1 mm each time during lamination on corrugated cardboard!

4.7

Barcode (EAN 13 / EAN 8)

- Minimum size 82% (SC0)
- Bar width reduction 0.01 mm
- Please note the necessary bright field.



4.8

Colour structure

The colour structure of the printed image may only contain the required colours / varnishes. A maximum of six colours and two varnishes can be used in one printing process.

The permitted colour systems for the printed image are:

- CMYK (process colour)
- Pantone (full-tone colour)
- HKS (full-tone colour)

The printing colours must be reproduced in a correct, standardised designation.

The selection of the colour fan is always based on the surface of the printing substrate. Take Pantone, for example: for coated papers (Pantone C) and for uncoated papers (Pantone U).

RGB colours are generally not permitted.

Please colour finishes such as embossing, Braille or spot varnish in an additional full-tone colour with an unambiguous name and the 'overprinting' attribute and create these elements as vector graphics on a separate level.

4.9

Minimum line thickness for foil and relief embossing

Foil embossing: Positive 0.15 mm Negative 0.35 mm (0.5 mm for text)

Relief embossing: Positive 0.5 mm Negative 0.5 mm

Please note that these specifications for foil and relief embossing are for guidance only and may therefore vary. The result always depends on the respective motif and the cardboard used.

5.0

Saving the print data

Please do not use special characters in file names, folders and image references on principle.

5.1

Creating PDFs

- Min. PDF version 1.5
- Do not store password protection
- Embed fonts in the PDF or convert them into paths

We generally prefer PDFs in the **PDF X4** standard.

With this standard, the transparency is retained and we can still make desired or technically necessary adjustments.

Please avoid PDF data in the **PDF X3** standard, since desired or technically necessary adjustments are difficult to make at this stage.

5.2

Open data

If you would like to transfer data to us openly (Adobe Illustrator, Adobe InDesign, Esko ArtPro), please note the following information:

- Always include all linked files.
- Convert all texts into paths or provide all fonts used.
- Do not use RGB colours (even in linked files).
- Always set black text to 'overprinting'.

6.0

Data transfer

The data can be made available by uploading it via FTP or HTTPS. Alternatively, you can also transfer the data by means of a download link or email attachment (max. 10 MB).

6.1

Uploading data via FTP

Please enter the address '**ftp://cloud.karlknauer.de**' into the address line of your FTP data transfer-compatible software.

You can transfer the data after entering the login credentials listed below (username and password).

Username: karlknauer

Password: biberach

6.2

Uploading data via HTTPS

Please enter the address '**https://cloud.karlknauer.de**' into the address line of your internet browser.

After entering the login credentials listed below (username and password), you can select the data using the internet browser and upload it to our server.

Username: karlknauer

Password: biberach

In both cases, the data is transferred directly to our EIP Department.

If you have any questions, we will be happy to help you.

KARL KNAUER KG

Zeller Straße 14
77781 Biberach/Baden
Deutschland

T +49 (7835) 782 560
ebv@karlknauer.de
www.karlknauer.de